




ANNUAL  
REPORT  
2022

**TRAC ENGINEERING  
LTD  
CARBON REDUCTION PLAN  
GHG EMISSIONS  
PUBLISHED OCTOBER 2023**

A decorative graphic on the left side of the page consisting of several vertical green lines of varying shades, from light green to lime green, that curve inward at the bottom.

## CONTENTS

- 1.0 NET ZERO COMMITMENT
  - 2.0 WHAT ARE SCOPES 1,2,3?
  - 3.0 BASELINE FIGURES
  - 4.0 CURRENT YEAR FIGURES
  - 5.0 REDUCTION PROJECTS
  - 6.0 COMPLETED PROJECTS
  - 7.0 DECLARATION AND SIGN OFF
  - 8.0 REVISION STATUS
- 
- A decorative graphic on the right side of the page consisting of several vertical green lines of varying shades, from light green to lime green, that curve inward at the top.



## 1.0 NET ZERO COMMITMENT

TRAC have committed to the following net zero targets as part of the SME Climate Commitment Scheme, which is itself part of the UN's Race to Zero initiative and is as follows:

### *The SME Climate Commitment*

*Recognising that climate change poses a threat to the economy, nature and society at large, our company commits to take action immediately in order to:*

*Halve our greenhouse gas emissions before 2030*

*Achieve net zero emissions before 2050*

*Disclose our progress on a yearly basis*

*In doing so, we are proud to be recognised by the United Nations Race to Zero campaign, and join governments, businesses, cities, regions, and universities*

*around the world that share the same mission.*

This commitment can be verified here - <https://smeclimatehub.org/committed-businesses/>

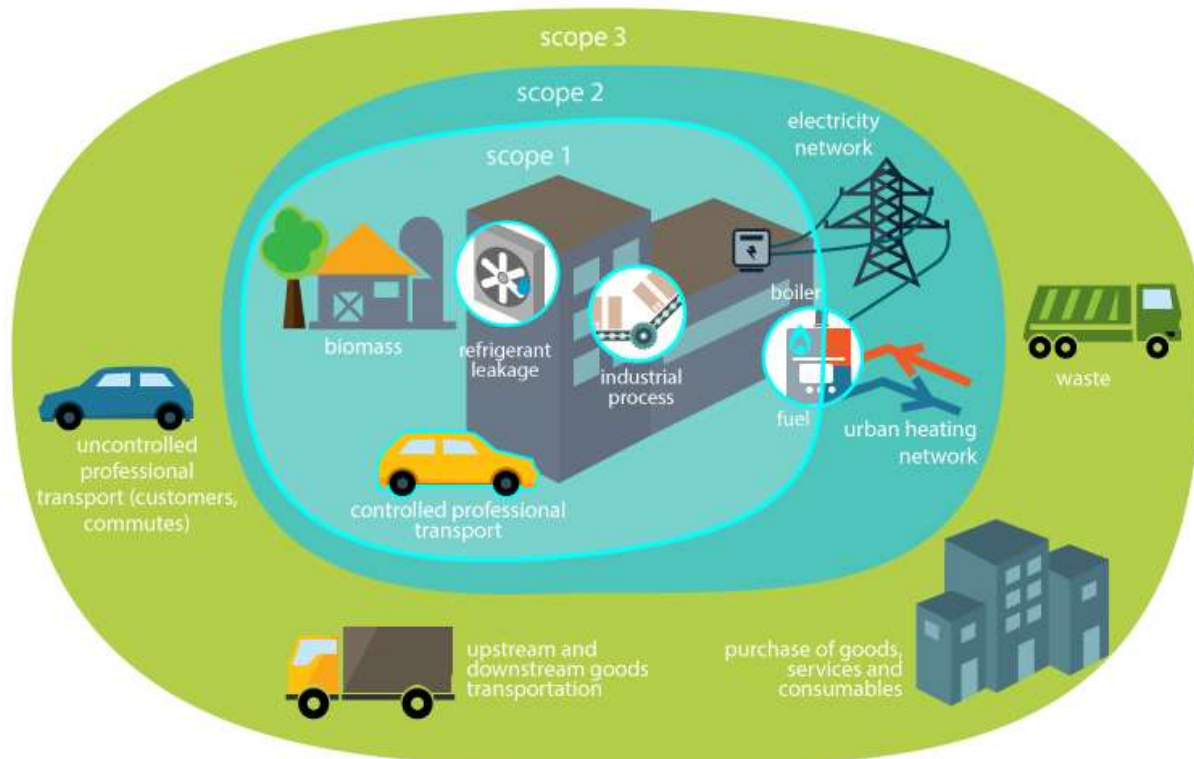
Furthermore, with our parent company office based in Scotland, we have committed to net zero by 2045, in line with the Scottish Government's aims.

## 1.1 SCIENCE BASED TARGETS

One of the key actions of our Environmental and Sustainability Strategy was to develop and implement Science Based Targets. We set a new baseline year of 2019 and had our target validated by the Science Based Targets Initiative (SBTi) in 2022.

As part of the TRAC Group, TRAC Engineering is committed to reducing our scope 1 and 2 baseline figures by 46% by 2030 and being net zero across all scopes by 2045. As an SME, we are not required to set near-term targets on our Scope 3 emissions by the SBTi, however as a responsible organisation we are making efforts to widen what we monitor and include in our Scope 3 emissions and to take our own measures to reduce these as far as possible.

## 2.0 WHAT ARE SCOPES 1, 2, 3?



Schema : illustration of scopes perimeters for Greenhouse Gas emissions balance

When we calculate our greenhouse gas emissions, we do so by splitting the sources of our data into 3 scopes.

- Scope 1 is direct emissions on site – generally this is gas boilers and fuel used by our fleet for deliveries, business travel etc.
- Scope 2 is indirect emissions – these are emissions which are generated elsewhere but directly attributed to our business e.g. the electricity we use.
- Scope 3 is upstream and downstream activities and can encompass many elements. In TRAC/Radio Design we are currently monitoring waste, water and fuel expenses and commuting for staff. We have plans to develop our emissions monitoring for scope 3 over the next few years.



## 2.0 BASELINE FIGURES

BASELINE 2019 YEAR:	
<b>ADDITIONAL DETAILS RELATING TO BASELINE EMISSIONS CALCULATIONS:</b>	
<ul style="list-style-type: none"><li>• Figures calculated using DEFRA Reporting Conversion factors 2019 published by the UK Government - <a href="http://www.gov.uk">Greenhouse gas reporting - Conversion Factors 2019 - GOV.UK (www.gov.uk)</a></li><li>• Scope 1 - Gas used for fuel and diesel for fleet</li><li>• Scope 2 - Electricity</li><li>• Scope 3 - Landfill waste, water, business travel from expenses (Fuel, train, taxi etc), employee commutes.</li></ul>	
<ul style="list-style-type: none"><li>• Exclusions - purchased goods and services, supplier data - unknown.</li><li>• There were no flights associated with TRAC Engineering work in 2019.</li><li>• There were no AC unit or fire extinguisher unit top ups of F gases in 2019.</li></ul>	
Emissions	ENG
Scope 1	1019.4
Scope 2	39.8
Scope 3	185.2
<b>TOTAL</b>	<b>1244.4</b>

### Notes:

N.B. Fuel for plant and fleet makes up most TRAC Engineering's Scope 1 emissions.

Employee commutes were added to scope 3 data for the first time in 2022 and an estimate added to the 2019 baseline.



## 3.0 CURRENT YEAR FIGURES

CURRENT YEAR:	2022
<b>ADDITIONAL DETAILS RELATING TO BASELINE EMISSIONS CALCULATIONS:</b>	
<ul style="list-style-type: none"><li>Figures calculated using DEFRA Reporting Conversion factors 2022 published by the UK Government - <a href="https://www.gov.uk/government/publications/greenhouse-gas-reporting-conversion-factors-2022">Greenhouse gas reporting: conversion factors 2022 - GOV.UK (www.gov.uk)</a></li><li>Scope 1 – Gas used for fuel and diesel for fleet</li><li>Scope 2 – Electricity</li><li>Scope 3 – Landfill waste, water, business travel from expenses (Fuel, train, taxi etc), employee commutes.</li></ul>	
<ul style="list-style-type: none"><li>Exclusions – purchased goods and services, supplier data – unknown.</li><li>There were no flights associated with TRAC Engineering work in 2022.</li><li>UK - There were no AC unit or fire extinguisher unit top ups of F gases in 2022.</li></ul>	
<b>Emissions</b>	<b>ENG</b>
Scope 1	149.6
Scope 2	11.0
Scope 3	38.9
<b>TOTAL</b>	<b>199.5</b>

Notes:

### Scopes 1 and 2

TRAC Engineering has had substantial restructuring and changes to fleet since baseline year and this accounts for much of the change in figures. Most staff are also hybrid working with the offices used minimally in 2022.

N.B. Electricity and gas emissions are significantly lower than the 2019 baseline due to office move to new, smaller premises which does not have a gas supply.

### Scope 3

We have continued to develop our scope 3 emissions, including employee commutes formally for the first time in 2022. We undertake an annual survey with all staff to get a snapshot of travel patterns and vehicle types from which we estimate our emissions from commuting. See section 5.0.



## 4.0 CARBON REDUCTION PROJECTS

Project	Description	Status
Electric Vehicles	<p>Electric Minis purchased and charge points installed at bases.</p> <p>Campaigns issued regarding Electric Vehicles.</p> <p>Octopus Energy EV purchase scheme joined and promoted to staff in 2022 to encourage and support uptake of lower emission vehicles throughout workforce.</p>	Ongoing
HVO Fuel	Investigating possibility of moving plant fleet onto HVO fuel, including which fleet is capable of operating with that fuel type.	Ongoing
Renewable Energy Contract	Electricity used at Clydeside and Chesterfield premises is now on a 100% renewable energy tariff.	Complete June 2023. Data to follow in 2023 report.

## 5.0 COMPLETED CARBON REDUCTION INITIATIVES

Environmental management measures and projects that have been completed or implemented since the 2019 baseline will be entered here, including an estimation of carbon saved as a result of the project.

Project	Description	Output						
Scope 3 enhancement - Employee Commute	<p>Surveys were issued to staff regarding their commutes pre and post pandemic in order to generate a baseline commute figure and current commute figure. This will help see differences made by hybrid working patterns where they exist and in future years, the difference made by uptake of electric vehicles.</p> <table border="1"> <thead> <tr> <th>Engineering</th> <th>UK tCO<sub>2</sub>e</th> </tr> </thead> <tbody> <tr> <td>2019</td> <td>157.8</td> </tr> <tr> <td>2022</td> <td>30.3</td> </tr> </tbody> </table>	Engineering	UK tCO <sub>2</sub> e	2019	157.8	2022	30.3	Complete. Annual survey for 2023 data was issued to staff and completed in June 2023.
Engineering	UK tCO <sub>2</sub> e							
2019	157.8							
2022	30.3							
Hybrid working	<p>Most office staff working from home the majority of the time.</p> <p>Working from home in 2022 reduced commuting by over 81000km over the year.</p>	14 tonnes CO <sub>2</sub> e saved from scope 3.						



## 6.0 DECLARATION AND SIGN OFF

This Carbon Reduction Plan has been completed in accordance with PPN 06/21 and associated guidance and reporting standard for Carbon Reduction Plans.

Emissions have been reported and recorded in accordance with the published reporting standard for Carbon Reduction Plans and the GHG Reporting Protocol corporate standard and uses the appropriate Government emission conversion factors for greenhouse gas company reporting

Scope 1 and Scope 2 emissions have been reported in accordance with SECR requirements and the required subset of scope 3 emissions have been reported in accordance with the published reporting standard for Carbon Reduction Plans and the Corporate Value Chain (Scope 3) Standard.

This Carbon Reduction Plan has been reviewed and signed off by the board of directors.

Managing Director Date	<b>E Hawthorn</b> 06.10.2023	Signature	
---------------------------	---------------------------------	-----------	--

## 8.0 REVISION STATUS

REVISION NUMBER	DATE	REASON FOR AMENDMENT
01	06.10.2023	First published report for 2022 data